

Environmental Masterplan Extracts

- Section 9 – [REP4 - 127](#)

EXISTING FEATURES

General Features

- Existing WCH Route
- Overhead Power Lines

Environmental Features

- Retained Woodland, Trees and Hedges (within Order Limits)
- Retained Woodland, Trees and Hedges (outside Order Limits)
- Waterbodies / Ponds
- Watercourses
- Tree Preservation Orders Area
- Individual Tree Preservation Orders
- Veteran Tree

PROPOSED PROJECT FEATURES

- Order Limits
- Permanent Acquisition of Land

General Project Features

- Existing Overhead Power Lines to be Removed
- Indicative Diverted and Modified Overhead Power Lines
- Proposed / Improved WCH Route
- Diverted / Redesignated WCH Route
- Proposed Carriageway
- Proposed Retaining Wall
- Proposed Cutting
- Proposed Embankment
- Proposed False Cutting Earthwork (up to 4m height above carriageway level typically at 1% (4%) gradient)
- Proposed Watercourse Diversion
- Proposed Attenuation Ponds / Water Bodies
- Proposed Highway Estate Boundary Fencing
- Reinstated HS1 'Meshed' Fencing
- Proposed Security Fencing (incorporating highway boundary fence)
- Proposed Fencing Gates
- Proposed Tunnel Portal Building Outline (sub-surface)
- Proposed Highway Lighting and Gantry
- Proposed Green Bridge
- Proposed Traveller Site Replacement

General Project Features cont.

- Proposed Replacement Open Space
- Proposed Replacement Common Land
- Proposed Recreational Sites

PROPOSED LANDSCAPE ELEMENTS

- Grassland (LE 1)**
- LE 1.3 Species Rich Grassland
 - LE 1.31 Species Rich Chalk Grassland
 - LE 1.32 Species Rich Annual Wildflower Grassland
 - LE 1.4 Rock and Scree

Planting (LE 2)

- LE 2.1 Woodland
- LE 2.11 Woodland With Non-Native Species
- LE 2.14 Wet / Carr Woodland
- LE 2.2 Woodland Edge
- LE 2.22 Scrub Woodland
- LE 2.4 Linear Belt of Shrubs and Trees
- LE 2.5 Shrubs With Intermittent Trees
- LE 2.7 Scattered Trees
- LE 2.8 Scrub / Scattered Scrub

Hedges (LE 4)

- LE 4.3 Native Species Hedge (untrimmed)
- LE 4.4 Native Hedgerow With Trees

Individual Trees (LE 5)

- LE 5.1 Individual Trees

Wetland Habitats (LE 6)

- LE 6.11 Water Bodies – Standing Water
- LE 6.12 Water Bodies and Associated Plants – Shallow Scrape Habitat
- LE 6.2 Banks and Ditches
- LE 6.21 Banks and Ditches – High Tide Root Features
- LE 6.4 Wet Grassland

General Project Features cont.

- LE 6.41 Marsh and Wet Grassland – Coastal Grazing Marsh

Hard Landscape Features (LE 7)

- LE 7.2 Green Roof
- LE 7.3 Car Park
- LE 7.4 Reinforced Earth Bund

Ecological Habitats (LE 8)

- LE 8.1 Open Mosaic Habitat
- LE 8.2 Ancient Woodland Compensation Planting
- LE 8.3 Woodland Mitigation Planting
- LE 8.4 Wetland / Fenland Creation
- LE 8.5 Ecology Pond (Indicative symbol only)
- LE 8.6 Acid Grassland Soil Salvage
- LE 8.7 Nitrogen Deposition (NDEP) Compensation Area

Earthworks

- Proposed Contours

PROPOSED ENVIRONMENTAL ELEMENTS

Noise (E 1)

- E 1.2 Acoustic Barrier-Suit Elements (typically incorporating highway boundary fence)

Water (E 2)

- Flood Compensation Areas (E2-FCA)
- Flood Defence (E2-FD)

Ecological (E 3)

- E 3.2 Ecological Habitat Creation and Receptor Sites for Protected Species
- E 3.2 Ecological Protection Measures – Dormouse Boxes
- E 3.2 Ecological Protection Measures – Bat / Bird Boxes
- E 3.2 Ecological Protection Measures – Ecological Culvert
- E 3.2 Ecological Protection Measures – Bat Barn Block
- E 3.2 Ecological Protection Measures – Ecological Fencing (incorporating highway boundary fence)

NOTES:

Land Reinstatement

The Environmental Masterplan is intended to show the permanent landscaping and environmental mitigation features that are embedded in the operational design. Land and features impacted by construction should be reinstated to the former condition and compensation upon completion, as far as reasonably practicable and as provided for in OCC Article 35, unless otherwise shown in the Environmental Masterplan.

WCH Terminology and Route Information

The term 'WCH Route' (which includes Public Rights of Way) refers to routes for vehicles, cyclists and horse riders and is used in the broad sense within the Environmental Masterplan to refer to routes intended for at least one (but not necessarily more than one) of these users. For further information, please refer to the Rights of Way and Access Plans (Application Document 3.7) and the Draft Development Consent Order (Application Document 3.1).

Veteran Trees

Veteran trees shown on the Environmental Masterplan include those identified in the Ancient Tree Inventory and project identified potential ancient or veteran trees.

Outline Landscape and Ecological Management Plan

The Outline Landscape and Ecology Management Plan (LEMP), separately sets out the proposed management for the environmental / landscape elements shown on the Environmental Masterplan. The Environmental Masterplan records the spatial extent and location of the environmental / landscape elements detailed within the Outline LEMP. The Outline LEMP details the management regime, management specifications and monitoring / input events for the proposals in each land parcel shown on the Environmental Masterplan. It focuses on the management requirements for land parcels to be permanently acquired within the Order Limits and which require specific landscape and ecological mitigation functions for the Project. For further detail regarding management requirements and principles, please refer to the Outline LEMP (Application Document 6.7).

Existing WCH Routes

Existing WCH route information is based on Local Authority data. For further details, please refer to the relevant Local Authority Derivative Public Rights of Way Map and Statement.

Environmental Feature Reference Symbol

An Environmental Feature Reference Symbol is provided for each environmental / landscape element. This consists of a Pit Reference, the Environmental Function and the specific Landscape / Environmental Element. The Pit Reference is unique to each element located, and comprises the Section number, Sheet number and unique Pit number. Additional Environmental Feature Reference Symbols have been added to elements which span more than one sheet. The difference between the 000 (Primary) Environmental Feature Reference Symbol and any additional (Secondary) reference is shown below.



Environmental Functions (EF)

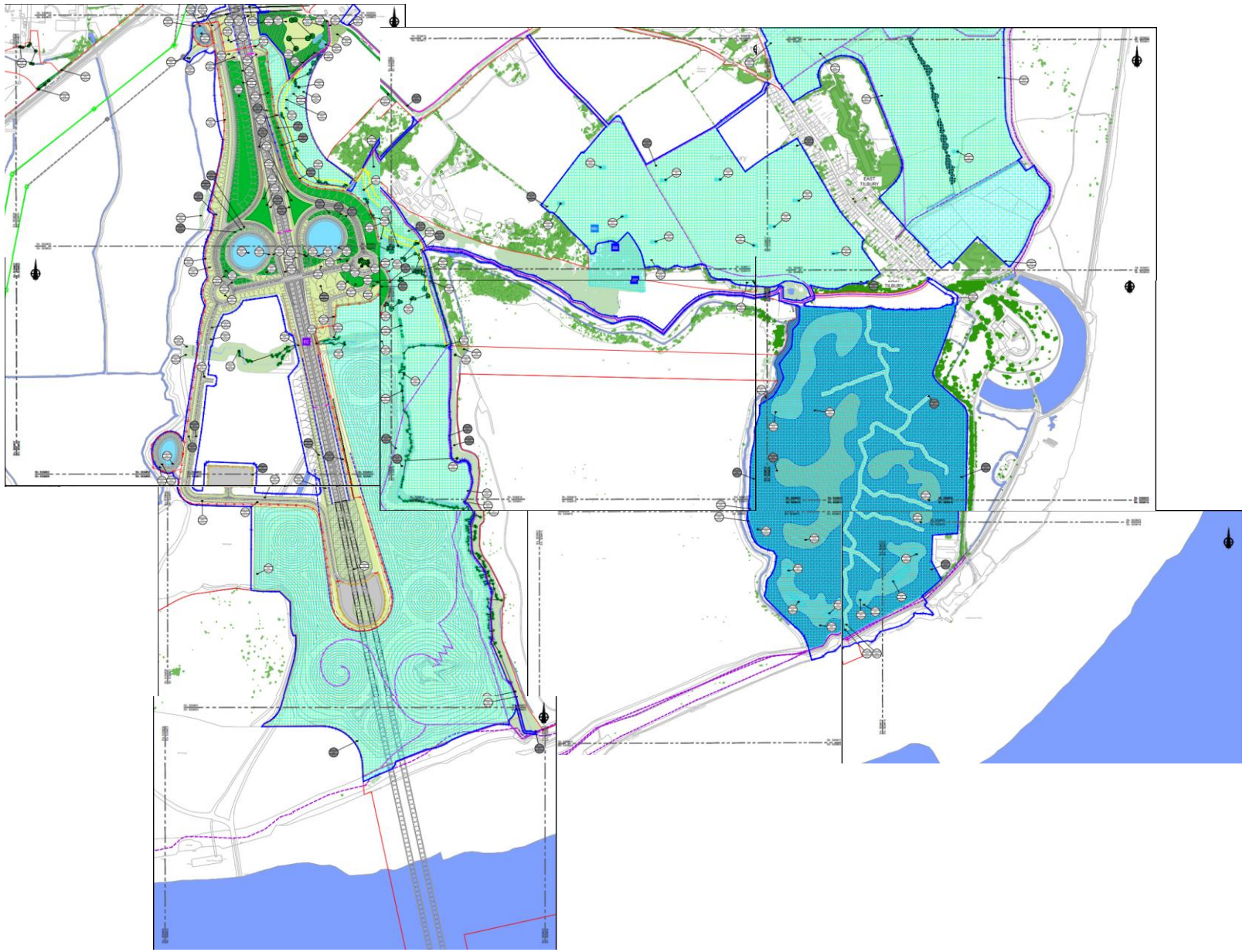
- EF1: Visual Screening
- EF2: Landscape Mitigation
- EF3: Enhancing the Built Environment
- EF4: Nature Conservation and Biodiversity
- EF5: Visual Amenity
- EF6: Heritage
- EF7: Auditory Amenity
- EF8: Water Quality
- EF9: Agriculture / Highway Boundary
- EF10: Access

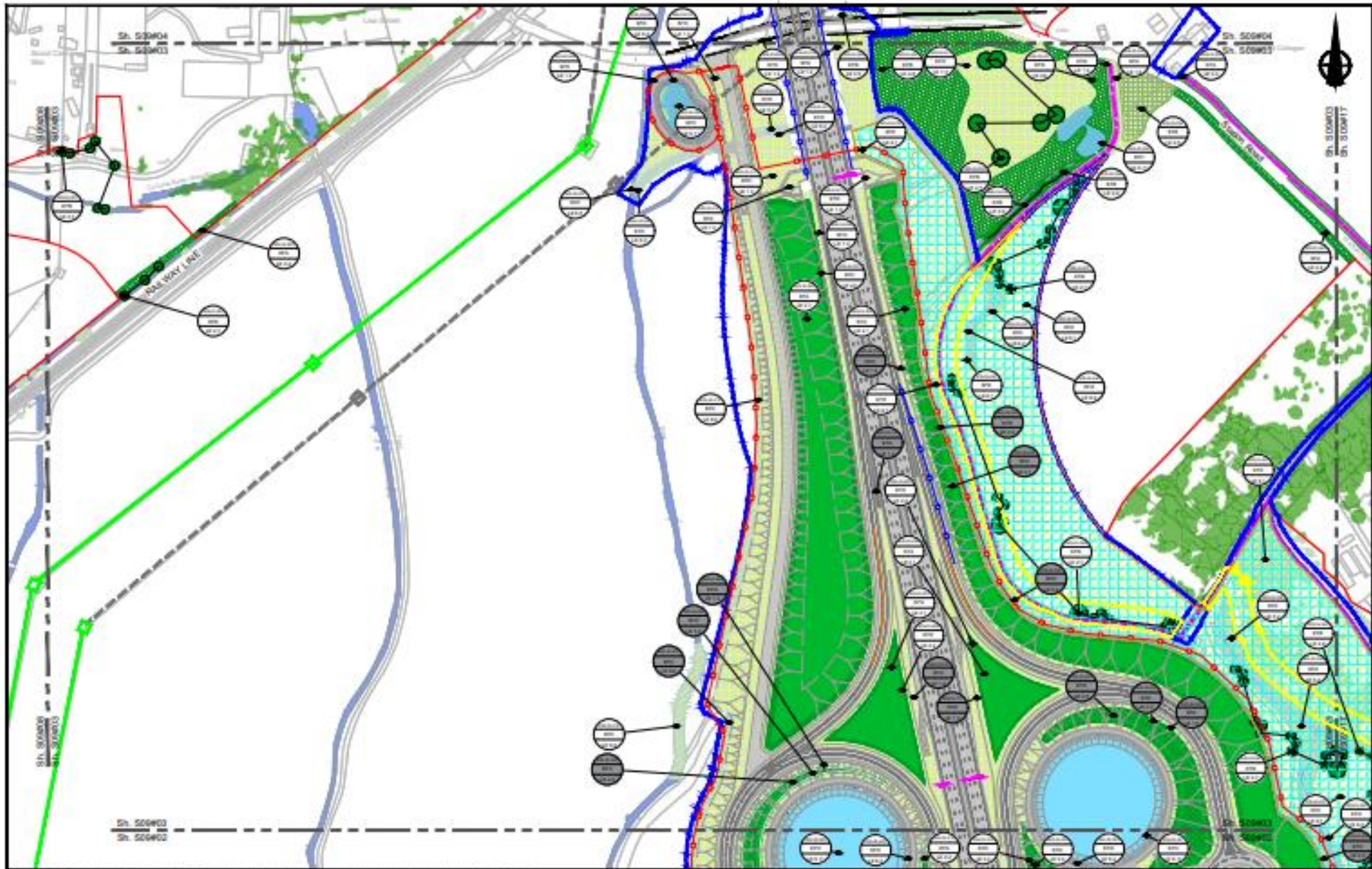
Project Design Report

For further detail on the Landscape Design and Special Category Land shown within these plans, as well as the associated design and approach, please refer to the Project Design Report, Volume 2 Book of Plans, and Design Principles document (Application Documents T.4, 6.2 and T.5 respectively).

Project Name	Lower Thames Crossing
Project Reference	TR010032/APP/16.2
Project Stage	Final Design
Project Location	Lower Thames Crossing

	Project Name Lower Thames Crossing	Project Reference TR010032/APP/16.2	Project Stage Final Design
	ENVIRONMENTAL MASTERPLAN LEGEND		
Project Location Lower Thames Crossing			
Project Reference TR010032/APP/16.2			

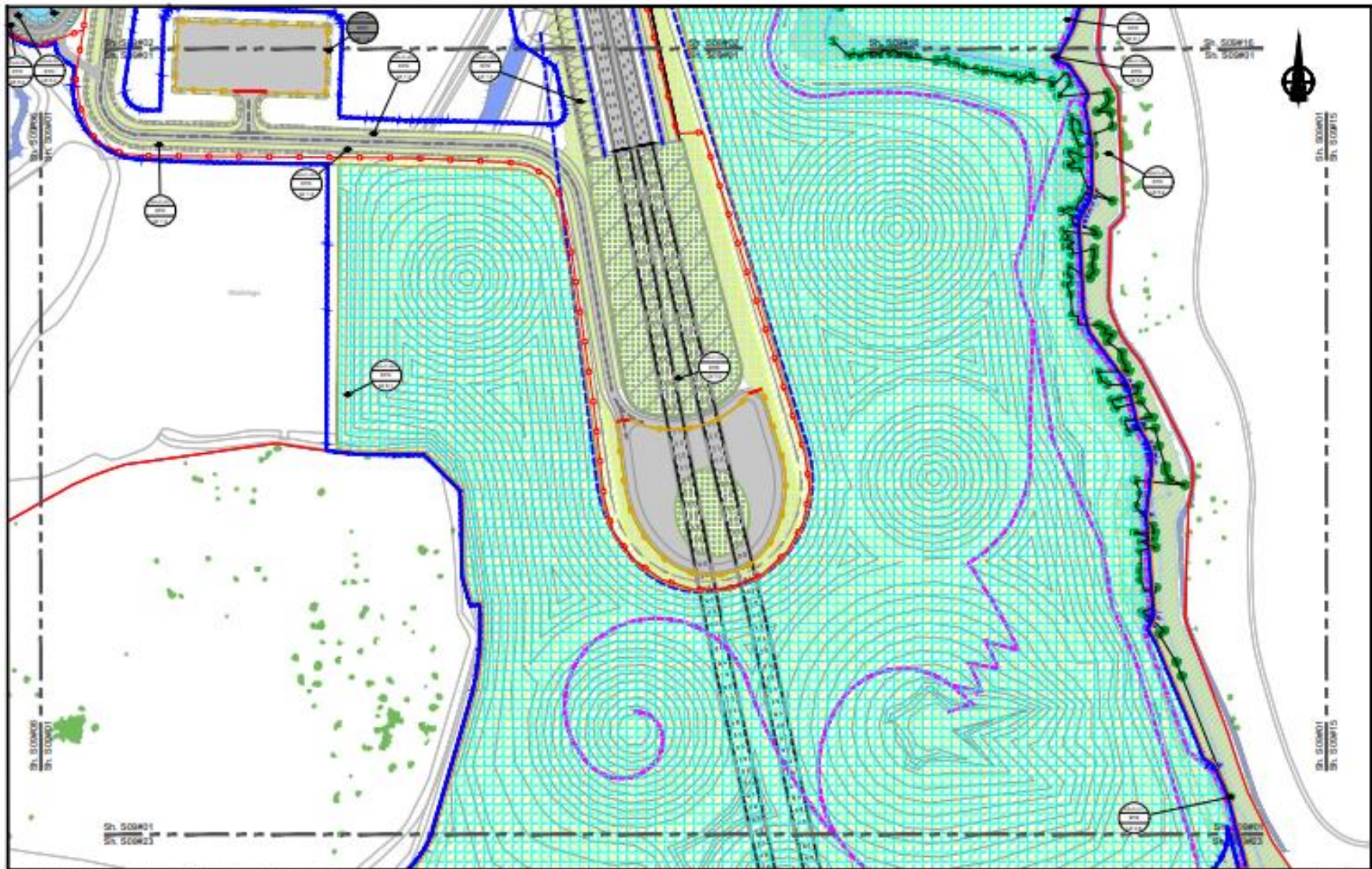




ENVIRONMENTAL ZONES		PLANNING BOUNDARIES		ROADWAY FEATURES		LANDSCAPE & PLANTING		UTILITIES & INFRASTRUCTURE	
[Green]	Green Space	[Blue]	Water	[Red]	Proposed Roadway	[Yellow]	Planting	[Black]	Utilities
[Light Green]	Open Green Space	[Dark Blue]	Water	[Orange]	Proposed Roadway	[Light Green]	Planting	[Grey]	Utilities
[Dark Green]	Woodland	[Light Blue]	Water	[Purple]	Proposed Roadway	[Dark Green]	Planting	[White]	Utilities
[Light Blue]	Open Water	[Dark Blue]	Water	[Pink]	Proposed Roadway	[Light Blue]	Planting	[Black]	Utilities
[Dark Blue]	Water	[Light Blue]	Water	[Yellow]	Proposed Roadway	[Dark Blue]	Planting	[White]	Utilities
[Light Green]	Open Green Space	[Dark Blue]	Water	[Orange]	Proposed Roadway	[Light Green]	Planting	[Grey]	Utilities
[Dark Green]	Woodland	[Light Blue]	Water	[Purple]	Proposed Roadway	[Dark Green]	Planting	[White]	Utilities
[Light Blue]	Open Water	[Dark Blue]	Water	[Pink]	Proposed Roadway	[Light Blue]	Planting	[Black]	Utilities
[Dark Blue]	Water	[Light Blue]	Water	[Yellow]	Proposed Roadway	[Dark Blue]	Planting	[White]	Utilities

national highways
 LOWER THAMES CROSSING

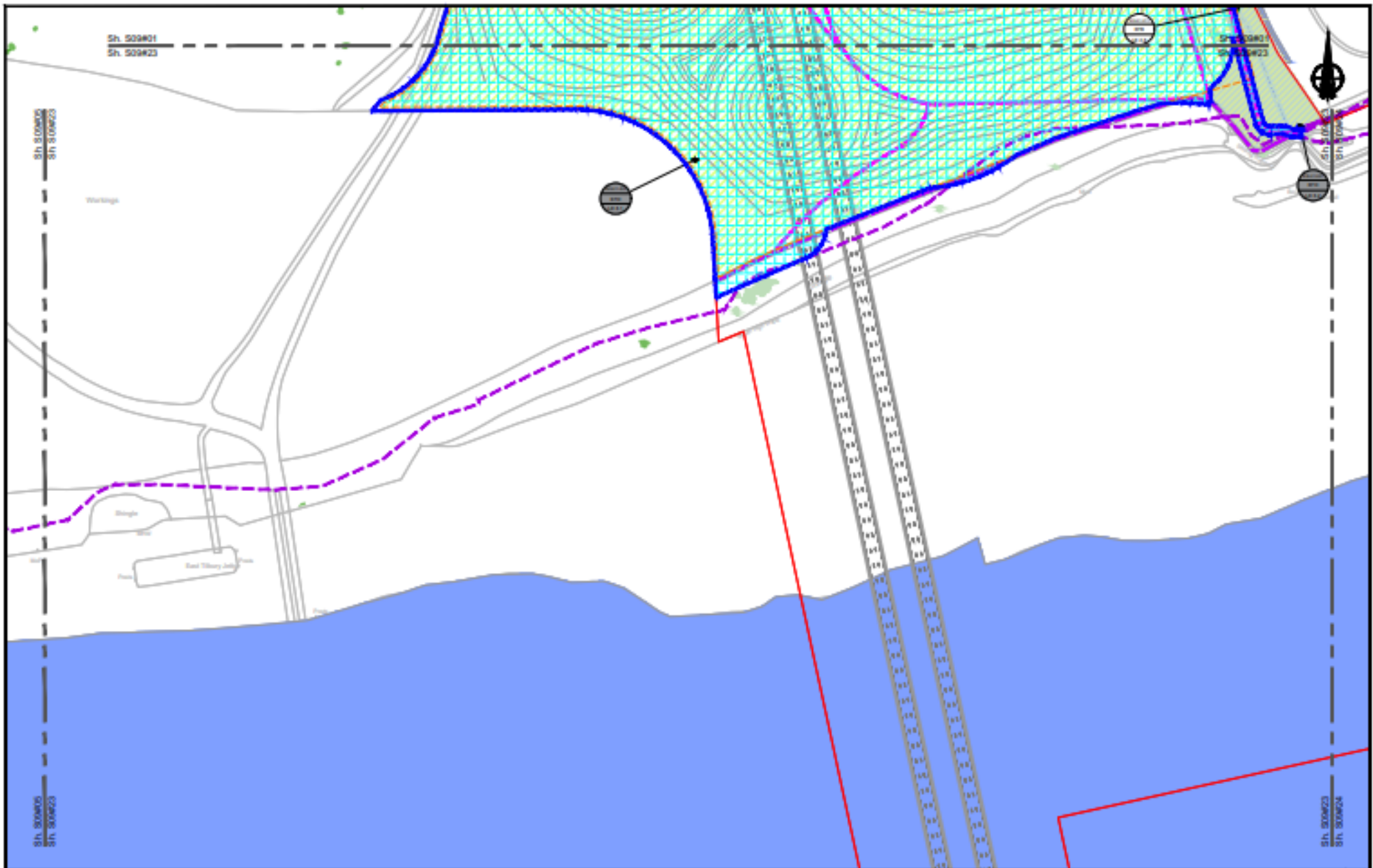
ENVIRONMENTAL MASTERPLAN
 SECTION 9
 SHEET 3
 H242039-CJV-EGN-506 (2020)050 2-DR-22-00008



Symbol/Color	Description
[Blue line]	Watercourse
[Green area]	Greenfield
[Yellow area]	Grassland
[Brown area]	Woodland
[Grey area]	Urban
[Black line]	Boundary
[Red line]	Proposed Road
[Blue line]	Proposed Watercourse
[Green line]	Proposed Greenfield
[Yellow line]	Proposed Grassland
[Brown line]	Proposed Woodland
[Grey line]	Proposed Urban
[Black line]	Proposed Boundary

national highways
 LOWER THAMES CROSSING

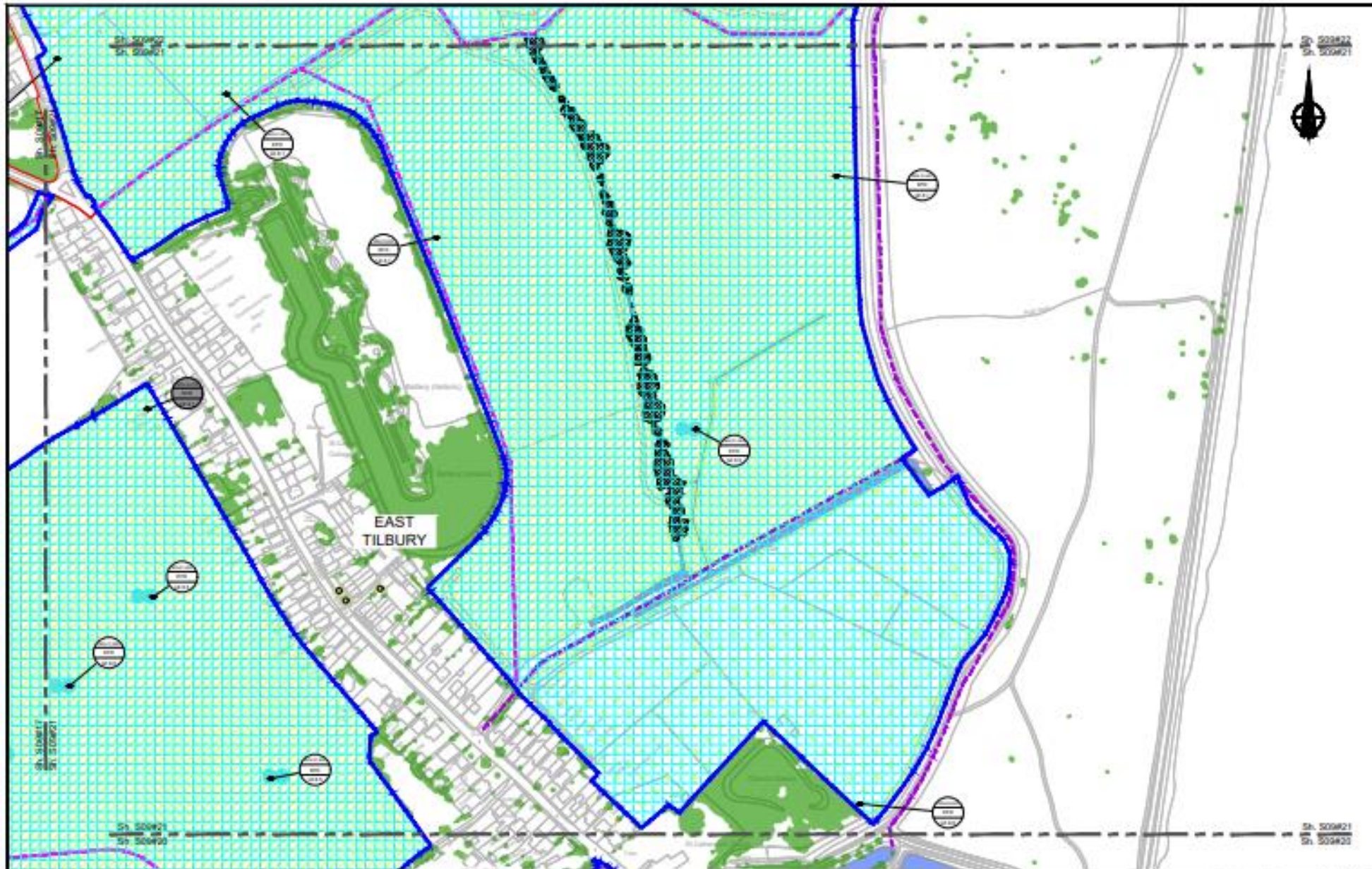
TR010032/APP/6.2
 ENVIRONMENTAL MASTERPLAN
 SECTION 9
 SHEET 1
 15/08/2019 - CAJ-G/Sy-G/Sy - EN00000 - 2-04-22-0000



ENVIRONMENTAL SENSITIVITY		WATER COURSE		WATER COURSE		WATER COURSE		WATER COURSE		WATER COURSE	
[Symbol]	Highly Sensitive	[Symbol]	Water Course	[Symbol]	Water Course	[Symbol]	Water Course	[Symbol]	Water Course	[Symbol]	Water Course
[Symbol]	Medium Sensitive	[Symbol]	Water Course	[Symbol]	Water Course	[Symbol]	Water Course	[Symbol]	Water Course	[Symbol]	Water Course
[Symbol]	Low Sensitive	[Symbol]	Water Course	[Symbol]	Water Course	[Symbol]	Water Course	[Symbol]	Water Course	[Symbol]	Water Course
[Symbol]	Not Sensitive	[Symbol]	Water Course	[Symbol]	Water Course	[Symbol]	Water Course	[Symbol]	Water Course	[Symbol]	Water Course



TR010032/APP16.2
 ENVIRONMENTAL MASTERPLAN
 SECTION 9
 SHEET 23
 3-DR-23-0001



	<p>ENVIRONMENTAL PROTECTION</p> <ul style="list-style-type: none"> Green: Environmental Protection Light Green: Environmental Protection Dark Green: Environmental Protection Blue: Environmental Protection 	<p>PLANNED INFRASTRUCTURE</p> <ul style="list-style-type: none"> Blue: Planned Infrastructure Orange: Planned Infrastructure Red: Planned Infrastructure Black: Planned Infrastructure 	<p>EXISTING INFRASTRUCTURE</p> <ul style="list-style-type: none"> Blue: Existing Infrastructure Orange: Existing Infrastructure Red: Existing Infrastructure Black: Existing Infrastructure 	<p>ENVIRONMENTAL CONSTRAINTS</p> <ul style="list-style-type: none"> Green: Environmental Constraints Light Green: Environmental Constraints Dark Green: Environmental Constraints Blue: Environmental Constraints 	<p>ENVIRONMENTAL CONSTRAINTS</p> <ul style="list-style-type: none"> Green: Environmental Constraints Light Green: Environmental Constraints Dark Green: Environmental Constraints Blue: Environmental Constraints 	<p>Scale: 1:50000</p> <p>Sheet: 21</p> <p>Sheet: 20</p> <p>Sheet: 22</p> <p>Sheet: 23</p> <p>Sheet: 24</p> <p>Sheet: 25</p> <p>Sheet: 26</p> <p>Sheet: 27</p> <p>Sheet: 28</p> <p>Sheet: 29</p> <p>Sheet: 30</p> <p>Sheet: 31</p> <p>Sheet: 32</p> <p>Sheet: 33</p> <p>Sheet: 34</p> <p>Sheet: 35</p> <p>Sheet: 36</p> <p>Sheet: 37</p> <p>Sheet: 38</p> <p>Sheet: 39</p> <p>Sheet: 40</p> <p>Sheet: 41</p> <p>Sheet: 42</p> <p>Sheet: 43</p> <p>Sheet: 44</p> <p>Sheet: 45</p> <p>Sheet: 46</p> <p>Sheet: 47</p> <p>Sheet: 48</p> <p>Sheet: 49</p> <p>Sheet: 50</p> <p>Sheet: 51</p> <p>Sheet: 52</p> <p>Sheet: 53</p> <p>Sheet: 54</p> <p>Sheet: 55</p> <p>Sheet: 56</p> <p>Sheet: 57</p> <p>Sheet: 58</p> <p>Sheet: 59</p> <p>Sheet: 60</p> <p>Sheet: 61</p> <p>Sheet: 62</p> <p>Sheet: 63</p> <p>Sheet: 64</p> <p>Sheet: 65</p> <p>Sheet: 66</p> <p>Sheet: 67</p> <p>Sheet: 68</p> <p>Sheet: 69</p> <p>Sheet: 70</p> <p>Sheet: 71</p> <p>Sheet: 72</p> <p>Sheet: 73</p> <p>Sheet: 74</p> <p>Sheet: 75</p> <p>Sheet: 76</p> <p>Sheet: 77</p> <p>Sheet: 78</p> <p>Sheet: 79</p> <p>Sheet: 80</p> <p>Sheet: 81</p> <p>Sheet: 82</p> <p>Sheet: 83</p> <p>Sheet: 84</p> <p>Sheet: 85</p> <p>Sheet: 86</p> <p>Sheet: 87</p> <p>Sheet: 88</p> <p>Sheet: 89</p> <p>Sheet: 90</p> <p>Sheet: 91</p> <p>Sheet: 92</p> <p>Sheet: 93</p> <p>Sheet: 94</p> <p>Sheet: 95</p> <p>Sheet: 96</p> <p>Sheet: 97</p> <p>Sheet: 98</p> <p>Sheet: 99</p> <p>Sheet: 100</p>
--	---	---	--	--	--	---

national highways

LOWER THAMES CROSSING

Scale: 1:50000

Sheet: 21

Sheet: 20

Sheet: 22

Sheet: 23

Sheet: 24

Sheet: 25

Sheet: 26

Sheet: 27

Sheet: 28

Sheet: 29

Sheet: 30

Sheet: 31

Sheet: 32

Sheet: 33

Sheet: 34

Sheet: 35

Sheet: 36

Sheet: 37

Sheet: 38

Sheet: 39

Sheet: 40

Sheet: 41

Sheet: 42

Sheet: 43

Sheet: 44

Sheet: 45

Sheet: 46

Sheet: 47

Sheet: 48

Sheet: 49

Sheet: 50

Sheet: 51

Sheet: 52

Sheet: 53

Sheet: 54

Sheet: 55

Sheet: 56

Sheet: 57

Sheet: 58

Sheet: 59

Sheet: 60

Sheet: 61

Sheet: 62

Sheet: 63

Sheet: 64

Sheet: 65

Sheet: 66

Sheet: 67

Sheet: 68

Sheet: 69

Sheet: 70

Sheet: 71

Sheet: 72

Sheet: 73

Sheet: 74

Sheet: 75

Sheet: 76

Sheet: 77

Sheet: 78

Sheet: 79

Sheet: 80

Sheet: 81

Sheet: 82

Sheet: 83

Sheet: 84

Sheet: 85

Sheet: 86

Sheet: 87

Sheet: 88

Sheet: 89

Sheet: 90

Sheet: 91

Sheet: 92

Sheet: 93

Sheet: 94

Sheet: 95

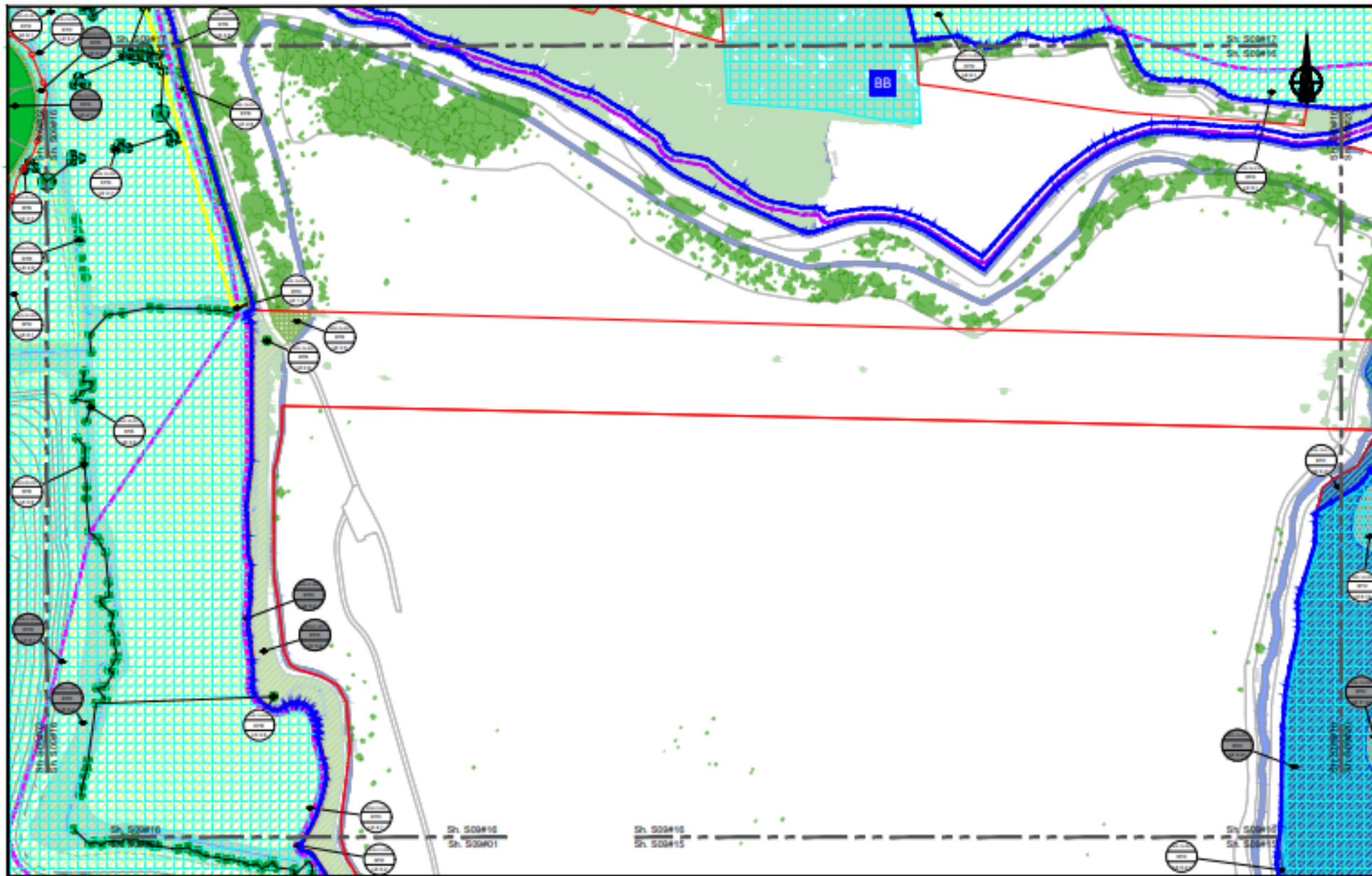
Sheet: 96

Sheet: 97

Sheet: 98

Sheet: 99

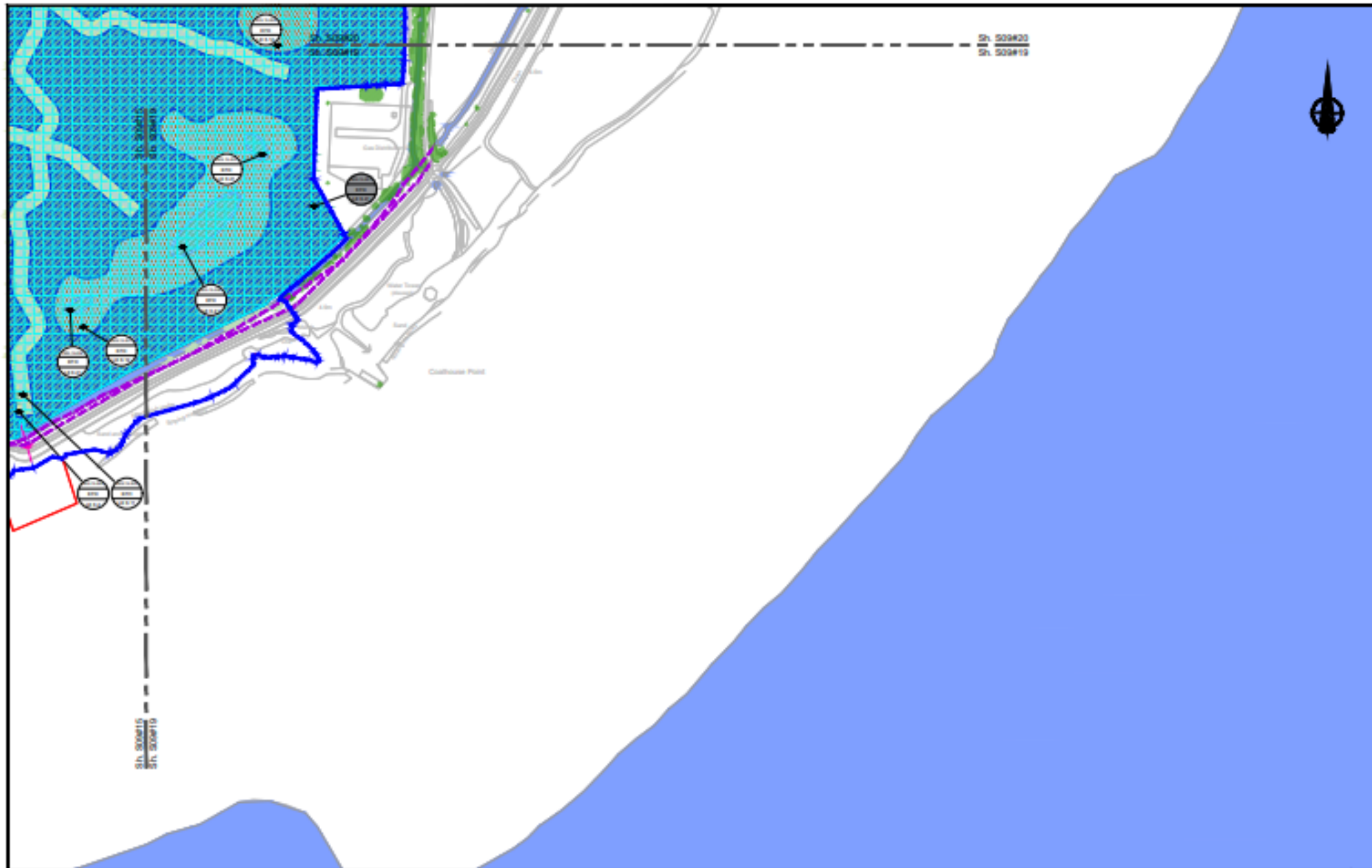
Sheet: 100



Vegetation		Water		Soil		Geology		Other	
[Green]	High Quality Woodland	[Blue]	High Quality Water	[Light Green]	High Quality Soil	[Light Blue]	High Quality Geology	[Orange]	Other
[Light Green]	Medium Quality Woodland	[Medium Blue]	Medium Quality Water	[Medium Green]	Medium Quality Soil	[Medium Blue]	Medium Quality Geology	[Yellow]	Other
[Light Blue]	Low Quality Woodland	[Light Blue]	Low Quality Water	[Light Green]	Low Quality Soil	[Light Blue]	Low Quality Geology	[Pink]	Other
[Light Green]	High Quality Grassland	[Light Blue]	High Quality Water	[Light Green]	High Quality Soil	[Light Blue]	High Quality Geology	[Yellow]	Other
[Light Green]	Medium Quality Grassland	[Light Blue]	Medium Quality Water	[Light Green]	Medium Quality Soil	[Light Blue]	Medium Quality Geology	[Yellow]	Other
[Light Green]	Low Quality Grassland	[Light Blue]	Low Quality Water	[Light Green]	Low Quality Soil	[Light Blue]	Low Quality Geology	[Yellow]	Other
[Light Green]	High Quality Scrub	[Light Blue]	High Quality Water	[Light Green]	High Quality Soil	[Light Blue]	High Quality Geology	[Yellow]	Other
[Light Green]	Medium Quality Scrub	[Light Blue]	Medium Quality Water	[Light Green]	Medium Quality Soil	[Light Blue]	Medium Quality Geology	[Yellow]	Other
[Light Green]	Low Quality Scrub	[Light Blue]	Low Quality Water	[Light Green]	Low Quality Soil	[Light Blue]	Low Quality Geology	[Yellow]	Other
[Light Green]	High Quality Open Water	[Light Blue]	High Quality Water	[Light Green]	High Quality Soil	[Light Blue]	High Quality Geology	[Yellow]	Other
[Light Green]	Medium Quality Open Water	[Light Blue]	Medium Quality Water	[Light Green]	Medium Quality Soil	[Light Blue]	Medium Quality Geology	[Yellow]	Other
[Light Green]	Low Quality Open Water	[Light Blue]	Low Quality Water	[Light Green]	Low Quality Soil	[Light Blue]	Low Quality Geology	[Yellow]	Other
[Light Green]	High Quality Wetland	[Light Blue]	High Quality Water	[Light Green]	High Quality Soil	[Light Blue]	High Quality Geology	[Yellow]	Other
[Light Green]	Medium Quality Wetland	[Light Blue]	Medium Quality Water	[Light Green]	Medium Quality Soil	[Light Blue]	Medium Quality Geology	[Yellow]	Other
[Light Green]	Low Quality Wetland	[Light Blue]	Low Quality Water	[Light Green]	Low Quality Soil	[Light Blue]	Low Quality Geology	[Yellow]	Other
[Light Green]	High Quality Meadow	[Light Blue]	High Quality Water	[Light Green]	High Quality Soil	[Light Blue]	High Quality Geology	[Yellow]	Other
[Light Green]	Medium Quality Meadow	[Light Blue]	Medium Quality Water	[Light Green]	Medium Quality Soil	[Light Blue]	Medium Quality Geology	[Yellow]	Other
[Light Green]	Low Quality Meadow	[Light Blue]	Low Quality Water	[Light Green]	Low Quality Soil	[Light Blue]	Low Quality Geology	[Yellow]	Other
[Light Green]	High Quality Pasture	[Light Blue]	High Quality Water	[Light Green]	High Quality Soil	[Light Blue]	High Quality Geology	[Yellow]	Other
[Light Green]	Medium Quality Pasture	[Light Blue]	Medium Quality Water	[Light Green]	Medium Quality Soil	[Light Blue]	Medium Quality Geology	[Yellow]	Other
[Light Green]	Low Quality Pasture	[Light Blue]	Low Quality Water	[Light Green]	Low Quality Soil	[Light Blue]	Low Quality Geology	[Yellow]	Other
[Light Green]	High Quality Arable	[Light Blue]	High Quality Water	[Light Green]	High Quality Soil	[Light Blue]	High Quality Geology	[Yellow]	Other
[Light Green]	Medium Quality Arable	[Light Blue]	Medium Quality Water	[Light Green]	Medium Quality Soil	[Light Blue]	Medium Quality Geology	[Yellow]	Other
[Light Green]	Low Quality Arable	[Light Blue]	Low Quality Water	[Light Green]	Low Quality Soil	[Light Blue]	Low Quality Geology	[Yellow]	Other
[Light Green]	High Quality Woodland	[Light Blue]	High Quality Water	[Light Green]	High Quality Soil	[Light Blue]	High Quality Geology	[Yellow]	Other
[Light Green]	Medium Quality Woodland	[Light Blue]	Medium Quality Water	[Light Green]	Medium Quality Soil	[Light Blue]	Medium Quality Geology	[Yellow]	Other
[Light Green]	Low Quality Woodland	[Light Blue]	Low Quality Water	[Light Green]	Low Quality Soil	[Light Blue]	Low Quality Geology	[Yellow]	Other



Initial Status of WFD
 TR010032/APPIB 2
 ENVIRONMENTAL MASTERPLAN
 SECTION 9
 SHEET 16
 HE549208-CJ-V-6-01-008 EN000000-2-DR-22-00017
 22/02/2022



Sh. 503420
Sh. 503419

Sh. 503415
Sh. 503416



ENVIRONMENTAL CONSTRAINTS		PLANNING CONSTRAINTS		LAND USE CONSTRAINTS		OTHER CONSTRAINTS	
[Symbol]	Environmentally Sensitive Area (ESA)	[Symbol]	Green Belt	[Symbol]	Highway	[Symbol]	Watercourse
[Symbol]	Local Nature Reserve (LNR)	[Symbol]	Green Belt (Agriculture)	[Symbol]	Major Road	[Symbol]	Watercourse (Flooded)
[Symbol]	Local Nature Reserve (LNR) (Ancient Woodland)	[Symbol]	Green Belt (Residential)	[Symbol]	Minor Road	[Symbol]	Watercourse (Dry)
[Symbol]	Local Nature Reserve (LNR) (Ancient Woodland) (Ancient Woodland)	[Symbol]	Green Belt (Other)	[Symbol]	Other Road	[Symbol]	Watercourse (Other)
[Symbol]	Local Nature Reserve (LNR) (Ancient Woodland) (Ancient Woodland) (Ancient Woodland)	[Symbol]	Green Belt (Other) (Ancient Woodland)	[Symbol]	Other Road (Ancient Woodland)	[Symbol]	Watercourse (Other) (Ancient Woodland)
[Symbol]	Local Nature Reserve (LNR) (Ancient Woodland) (Ancient Woodland) (Ancient Woodland) (Ancient Woodland)	[Symbol]	Green Belt (Other) (Ancient Woodland) (Ancient Woodland)	[Symbol]	Other Road (Ancient Woodland) (Ancient Woodland)	[Symbol]	Watercourse (Other) (Ancient Woodland) (Ancient Woodland)

national highways

LOWER THAMES CROSSING

Initial Status of WOP: A1

TR010032/APP16.2

ENVIRONMENTAL MASTERPLAN
SECTION 9
SHEET 19

HE540038-CIV-EN-908 EN000000_2-DR-22-00000



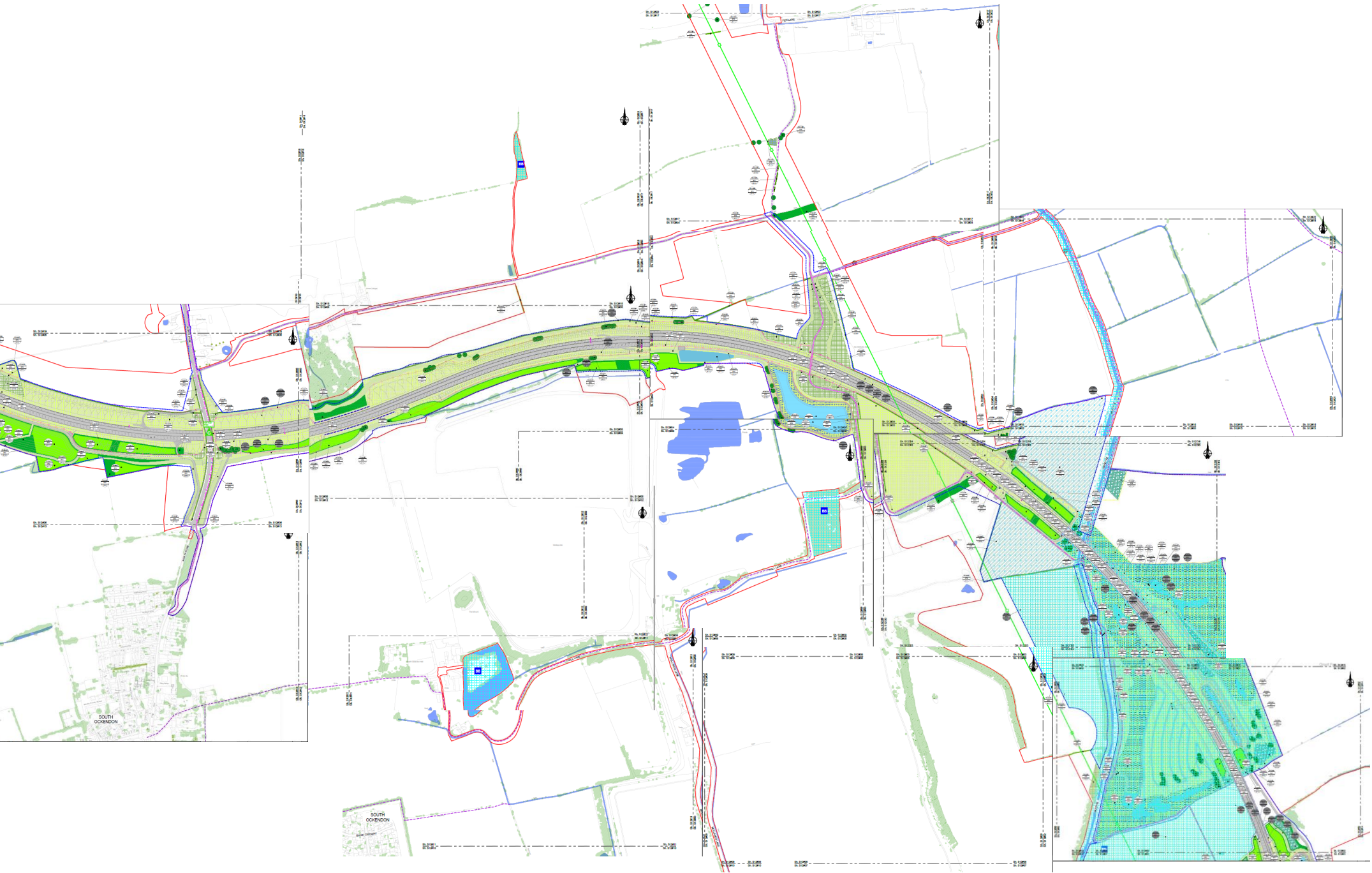
ENVIRONMENTAL SENSITIVITY		PLANNING CONSTRAINTS		LAND USE		PROTECTED AREAS		OTHER FEATURES	
[Green]	High	[Blue]	Green Belt	[Yellow]	Open Land	[Red]	Conservation Area	[Black]	Boundary
[Light Green]	Medium	[Light Blue]	Other Green Belt	[Light Yellow]	Other Open Land	[Light Red]	Other Conservation Area	[Grey]	Other Boundary
[Lightest Green]	Low	[Lightest Blue]	Other Green Belt	[Lightest Yellow]	Other Open Land	[Lightest Red]	Other Conservation Area	[Dotted]	Other Boundary

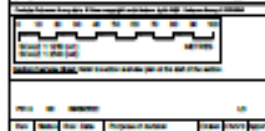
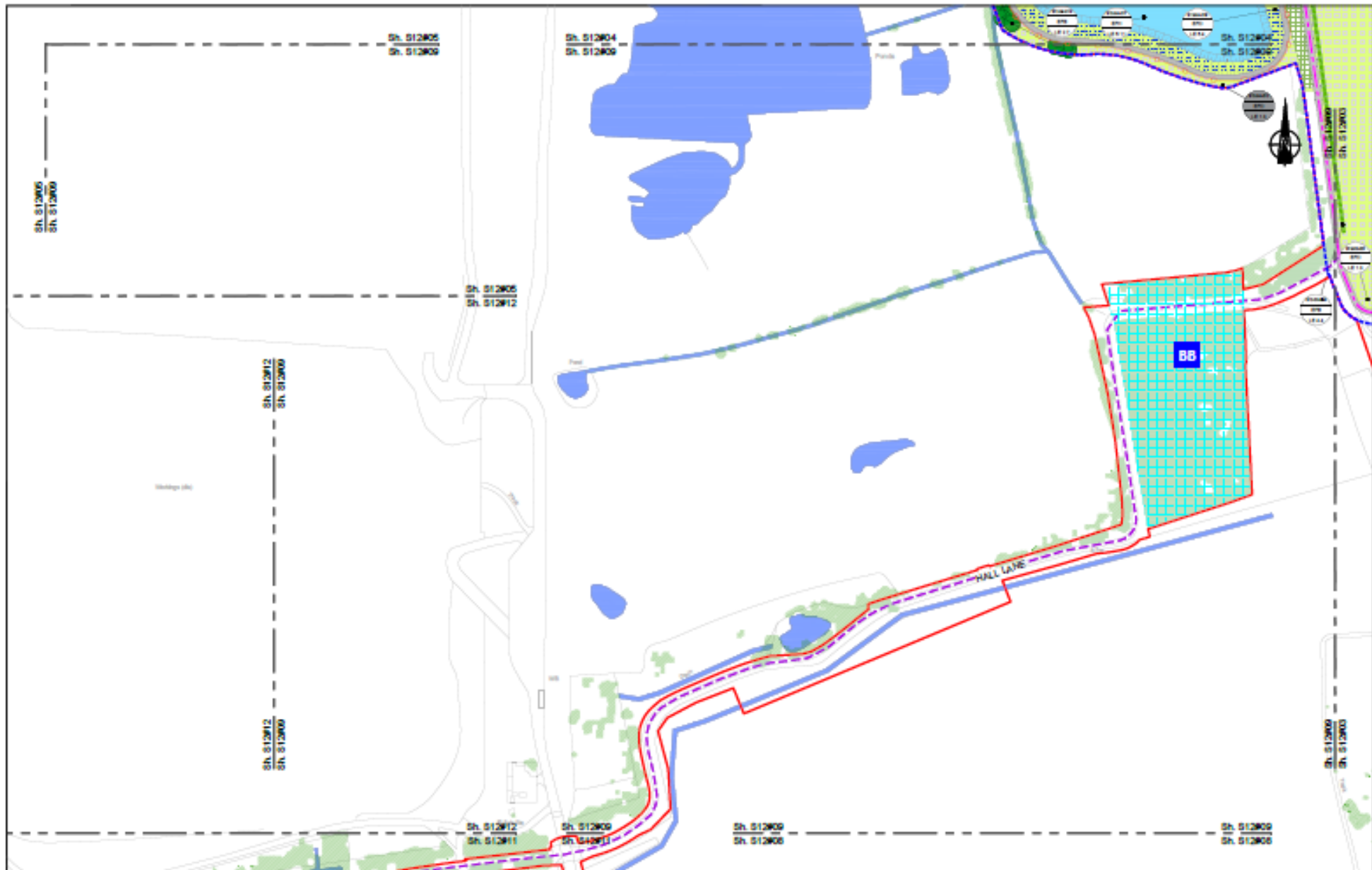


TR010032/APP16.2 ENVIRONMENTAL MASTERPLAN SECTION 9 SHEET 15	A1 15 of 15
--	----------------

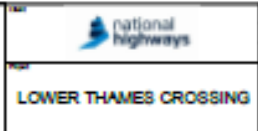
Environmental Masterplan Extracts

- Section 12 – [REP2 - 026](#)

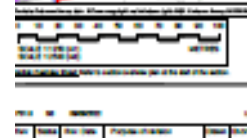
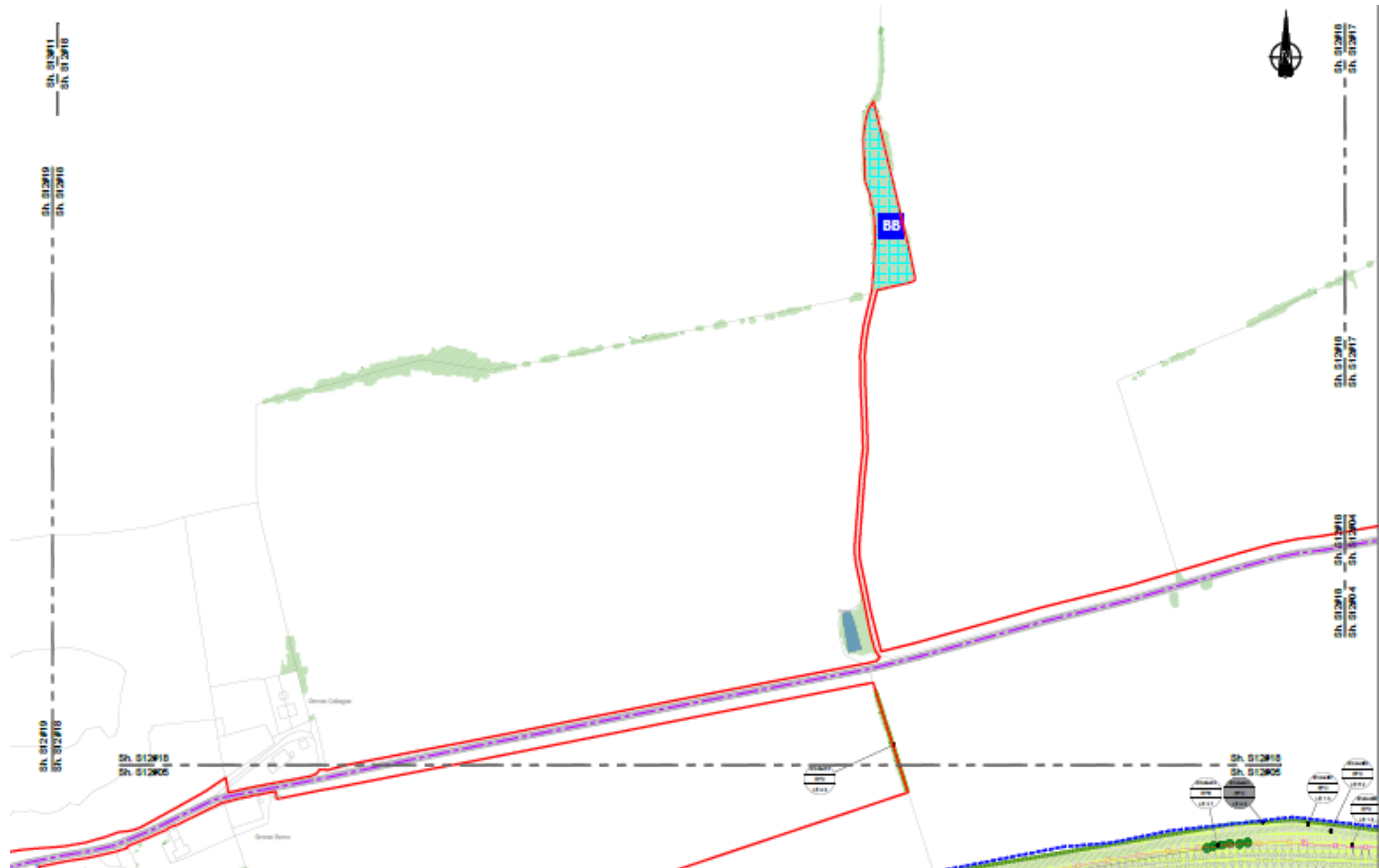




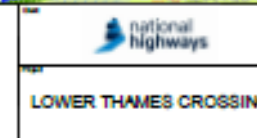
Legend		Legend		Legend		Legend		Legend	
[Red Line]	Proposed Crossing	[Green Area]	Green Belt	[Blue Area]	Water	[Light Blue Area]	Water	[Pink Area]	Proposed Crossing
[Blue Line]	Water	[Light Green Area]	Green Belt	[Dark Blue Area]	Water	[Light Blue Area]	Water	[Pink Area]	Proposed Crossing
[Dashed Line]	Proposed Crossing	[Light Green Area]	Green Belt	[Dark Blue Area]	Water	[Light Blue Area]	Water	[Pink Area]	Proposed Crossing
[Dotted Line]	Proposed Crossing	[Light Green Area]	Green Belt	[Dark Blue Area]	Water	[Light Blue Area]	Water	[Pink Area]	Proposed Crossing
[Dotted Line]	Proposed Crossing	[Light Green Area]	Green Belt	[Dark Blue Area]	Water	[Light Blue Area]	Water	[Pink Area]	Proposed Crossing
[Dotted Line]	Proposed Crossing	[Light Green Area]	Green Belt	[Dark Blue Area]	Water	[Light Blue Area]	Water	[Pink Area]	Proposed Crossing
[Dotted Line]	Proposed Crossing	[Light Green Area]	Green Belt	[Dark Blue Area]	Water	[Light Blue Area]	Water	[Pink Area]	Proposed Crossing
[Dotted Line]	Proposed Crossing	[Light Green Area]	Green Belt	[Dark Blue Area]	Water	[Light Blue Area]	Water	[Pink Area]	Proposed Crossing
[Dotted Line]	Proposed Crossing	[Light Green Area]	Green Belt	[Dark Blue Area]	Water	[Light Blue Area]	Water	[Pink Area]	Proposed Crossing
[Dotted Line]	Proposed Crossing	[Light Green Area]	Green Belt	[Dark Blue Area]	Water	[Light Blue Area]	Water	[Pink Area]	Proposed Crossing



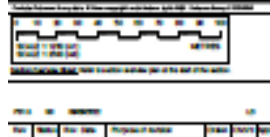
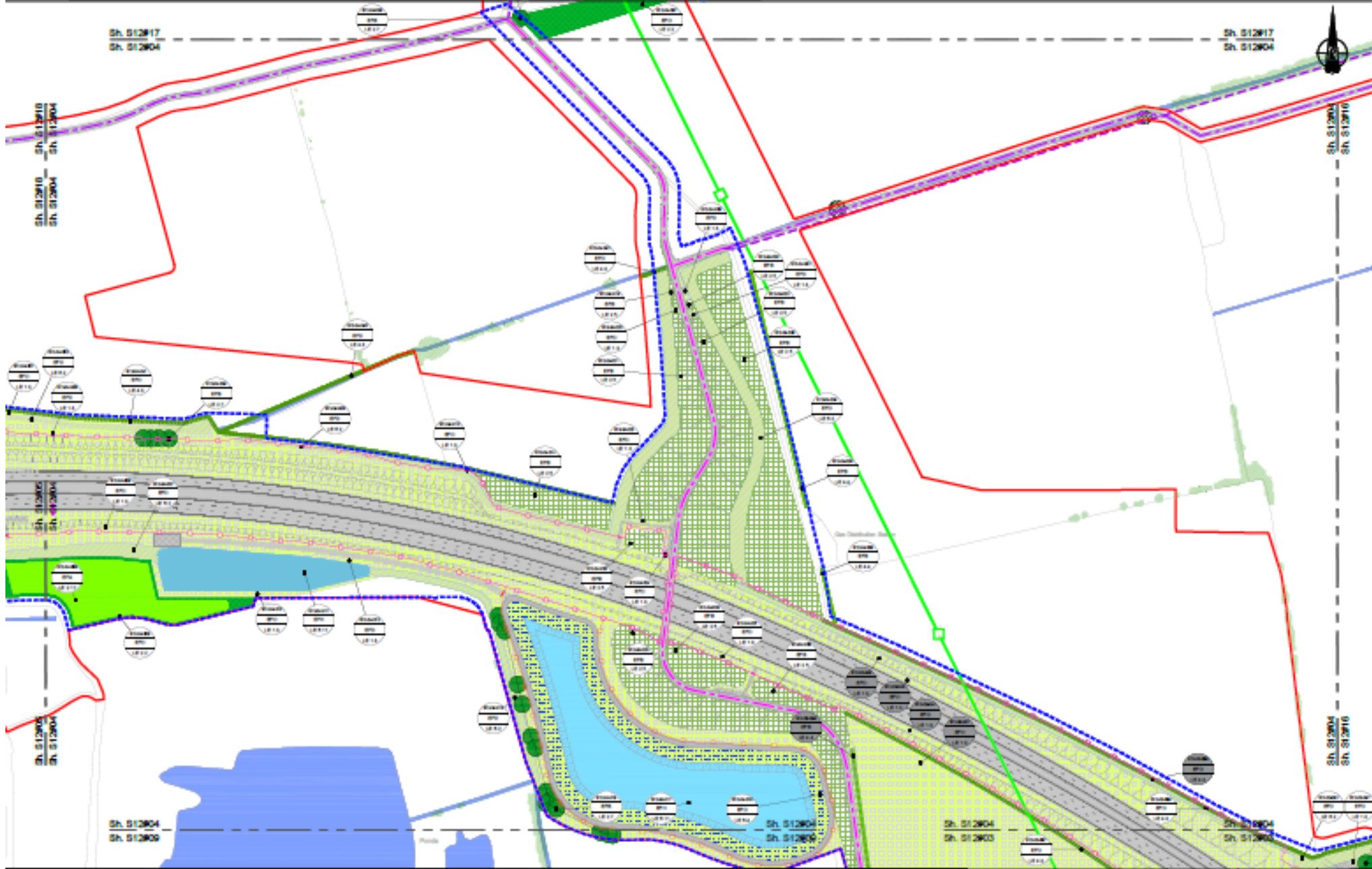
Project Title	Lower Thames Crossing
Project Reference	TR010032/APP/6.2
Project Stage	Environmental Masterplan
Project Section	SECTION 12
Project Sheet	SHEET 9
Project Date	15/03/2023
Project Author	15/03/2023
Project Reviewer	15/03/2023
Project Approver	15/03/2023



Vegetation		Soil		Groundwater		Other	
[Green Box]	Grassland	[Light Green Box]	Grassland	[Blue Box]	Water	[Red Box]	Other
[Light Green Box]	Grassland	[Light Green Box]	Grassland	[Blue Box]	Water	[Red Box]	Other
[Light Green Box]	Grassland	[Light Green Box]	Grassland	[Blue Box]	Water	[Red Box]	Other
[Light Green Box]	Grassland	[Light Green Box]	Grassland	[Blue Box]	Water	[Red Box]	Other
[Light Green Box]	Grassland	[Light Green Box]	Grassland	[Blue Box]	Water	[Red Box]	Other
[Light Green Box]	Grassland	[Light Green Box]	Grassland	[Blue Box]	Water	[Red Box]	Other
[Light Green Box]	Grassland	[Light Green Box]	Grassland	[Blue Box]	Water	[Red Box]	Other
[Light Green Box]	Grassland	[Light Green Box]	Grassland	[Blue Box]	Water	[Red Box]	Other
[Light Green Box]	Grassland	[Light Green Box]	Grassland	[Blue Box]	Water	[Red Box]	Other
[Light Green Box]	Grassland	[Light Green Box]	Grassland	[Blue Box]	Water	[Red Box]	Other



Project Name: Lower Thames Crossing
 Project Reference: TR010032/APR/6.2
ENVIRONMENTAL MASTERPLAN
SECTION 12
SHEET 18
 Date: 1/10/2019
 Scale: 1:1000
 Drawing No: HES-0038-CIV-024-612_0100000_2-09-22-00019




Environmental Designation Legend	
[Red outline]	Environmentally Sensitive Area
[Blue outline]	Watercourse
[Green outline]	Green Infrastructure
[Yellow outline]	Other Designation
[Green hatched]	Green Infrastructure
[Blue hatched]	Watercourse
[Yellow hatched]	Other Designation
[Red hatched]	Environmentally Sensitive Area
[Blue hatched]	Watercourse
[Green hatched]	Green Infrastructure
[Yellow hatched]	Other Designation

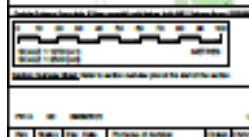
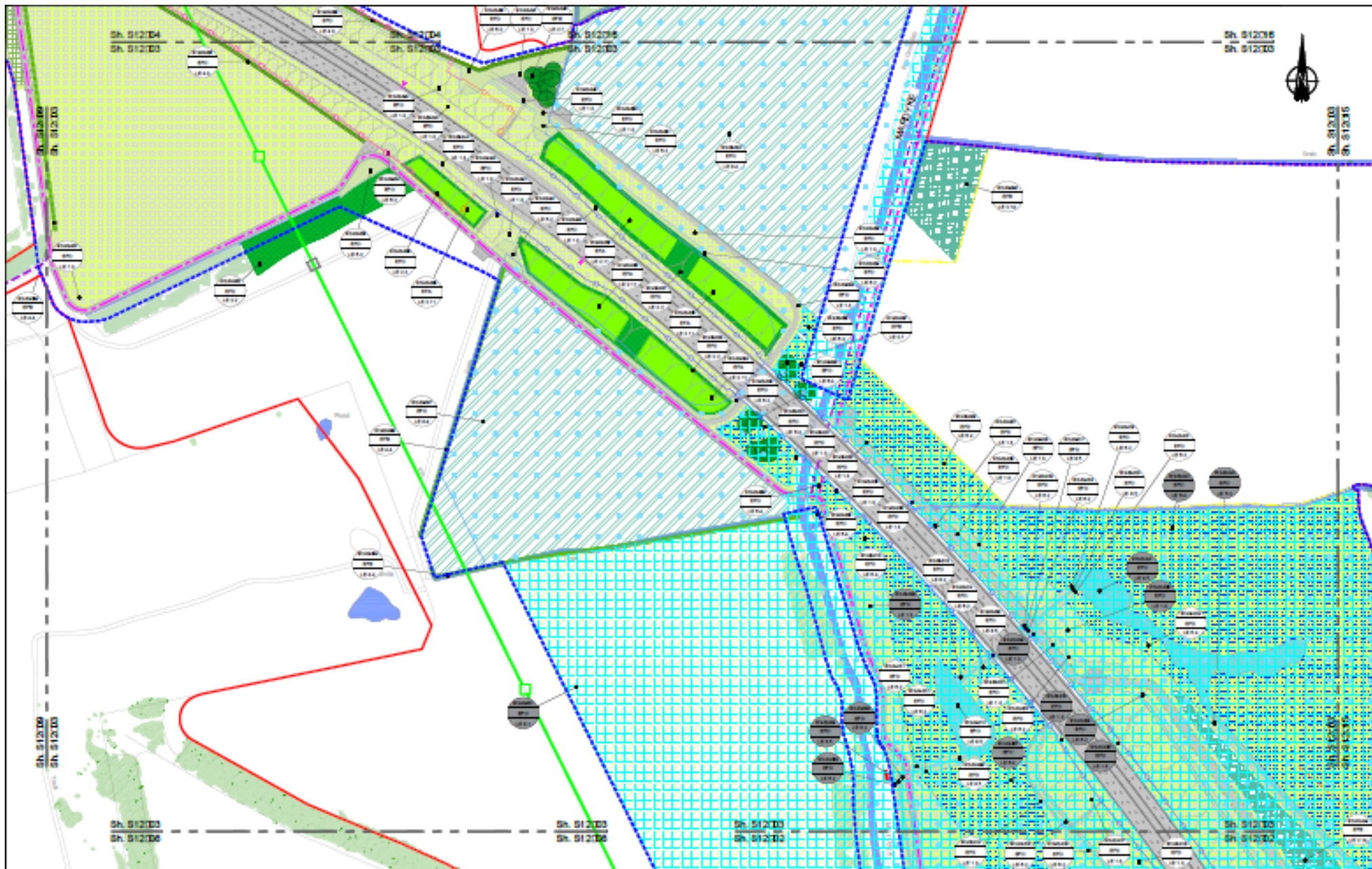
Proposed Features	
[Green circle]	Proposed Tree
[Blue circle]	Proposed Watercourse
[Yellow circle]	Proposed Other Feature
[Red circle]	Environmentally Sensitive Area
[Blue circle]	Watercourse
[Green circle]	Green Infrastructure
[Yellow circle]	Other Designation

Proposed Features	
[Green circle]	Proposed Tree
[Blue circle]	Proposed Watercourse
[Yellow circle]	Proposed Other Feature
[Red circle]	Environmentally Sensitive Area
[Blue circle]	Watercourse
[Green circle]	Green Infrastructure
[Yellow circle]	Other Designation

Proposed Features	
[Green circle]	Proposed Tree
[Blue circle]	Proposed Watercourse
[Yellow circle]	Proposed Other Feature
[Red circle]	Environmentally Sensitive Area
[Blue circle]	Watercourse
[Green circle]	Green Infrastructure
[Yellow circle]	Other Designation


LOWER THAMES CROSSING

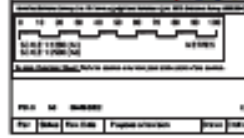
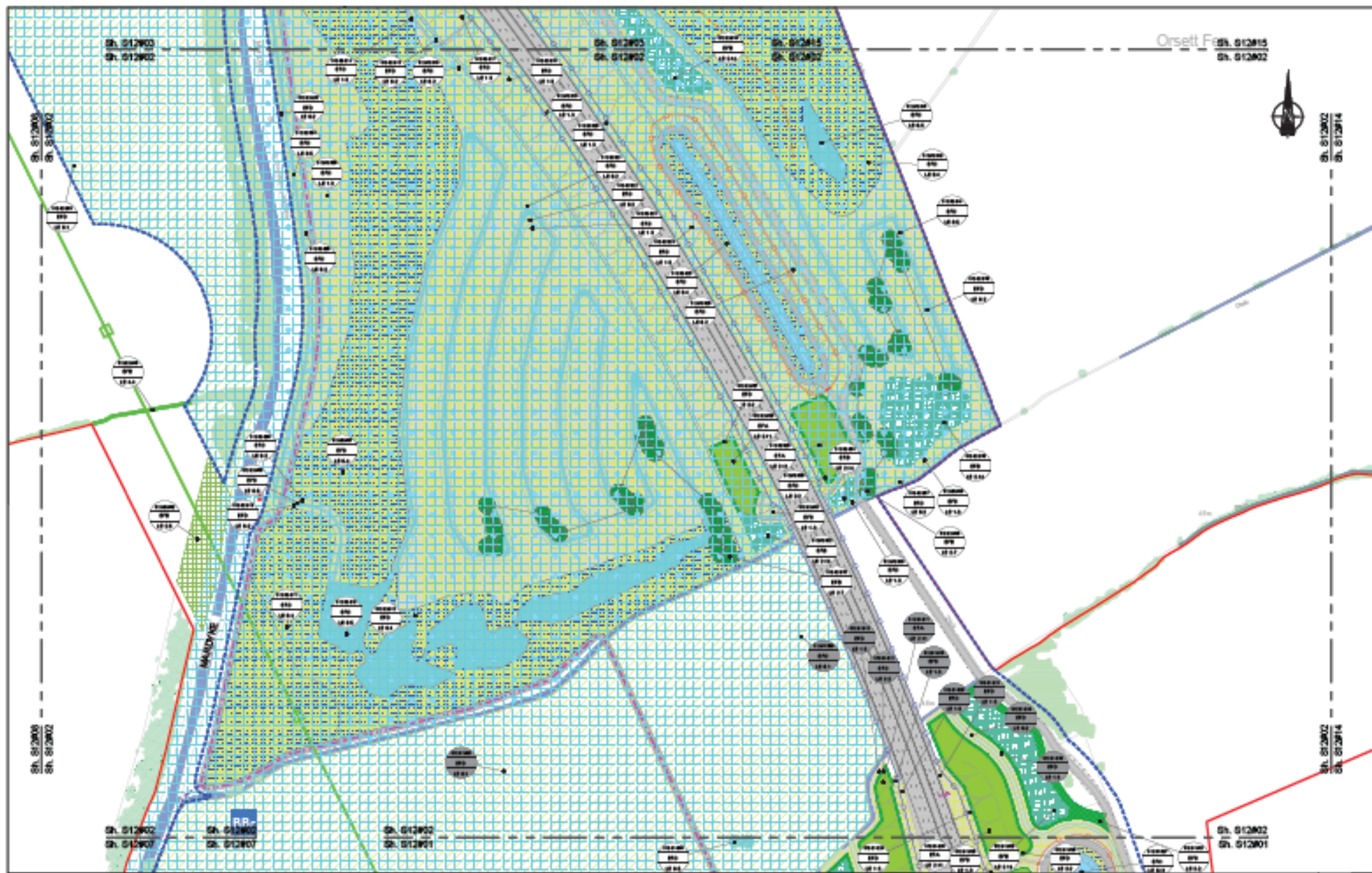
Initial Status of SMP
 TR010032/APP/S.2
ENVIRONMENTAL MASTERPLAN
SECTION 12
SHEET 4
 Project No: 105
 Date: 1/2020
 File Path: I:\ES-0039-CV-024-012_Env00000_2-DR-22-0000



Legend		Legend		Legend	
[Red Line]	Boundary	[Green Box]	Vegetation	[Blue Box]	Water
[Blue Box]	Water	[Yellow Box]	Management Area	[Pink Box]	Other
[Green Box]	Vegetation	[Blue Box]	Water	[Pink Box]	Other
[Yellow Box]	Management Area	[Blue Box]	Water	[Pink Box]	Other
[Pink Box]	Other	[Blue Box]	Water	[Pink Box]	Other

LOWER THAMES CROSSING

Initial Status or MAP
 TR010032/APP16.2
ENVIRONMENTAL MASTERPLAN
 SECTION 12
 SHEET 3
 IES40029-CLV-02V-012 EN000000 2-09-22-00004



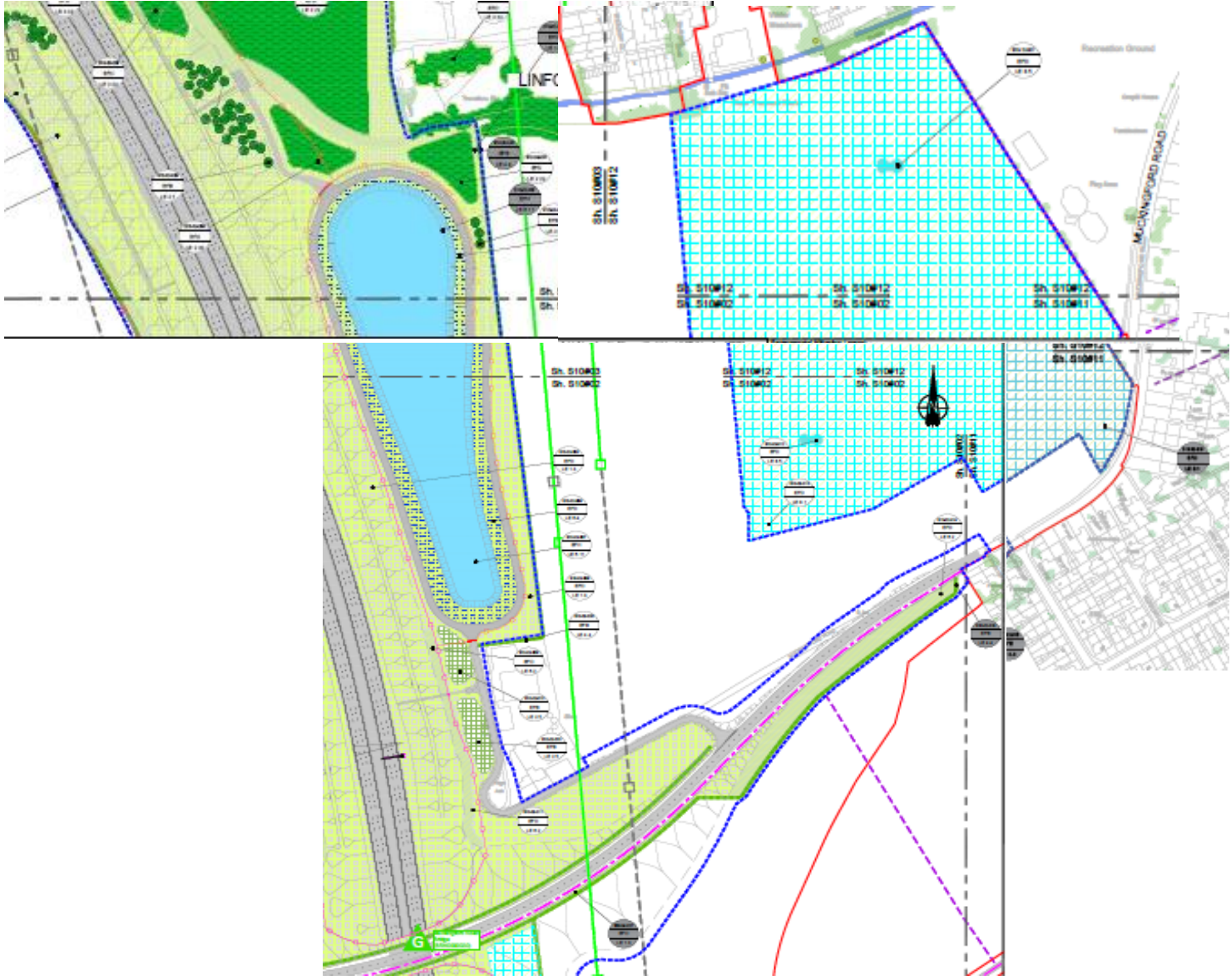
--	--	--	--	--	--	--	--	--	--	--	--	--	--	--	--	--	--	--	--	--	--	--	--	--	--	--	--	--	--	--	--	--	--	--	--	--	--	--	--	--	--	--	--	--	--	--	--	--	--	--	--

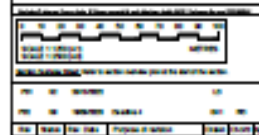
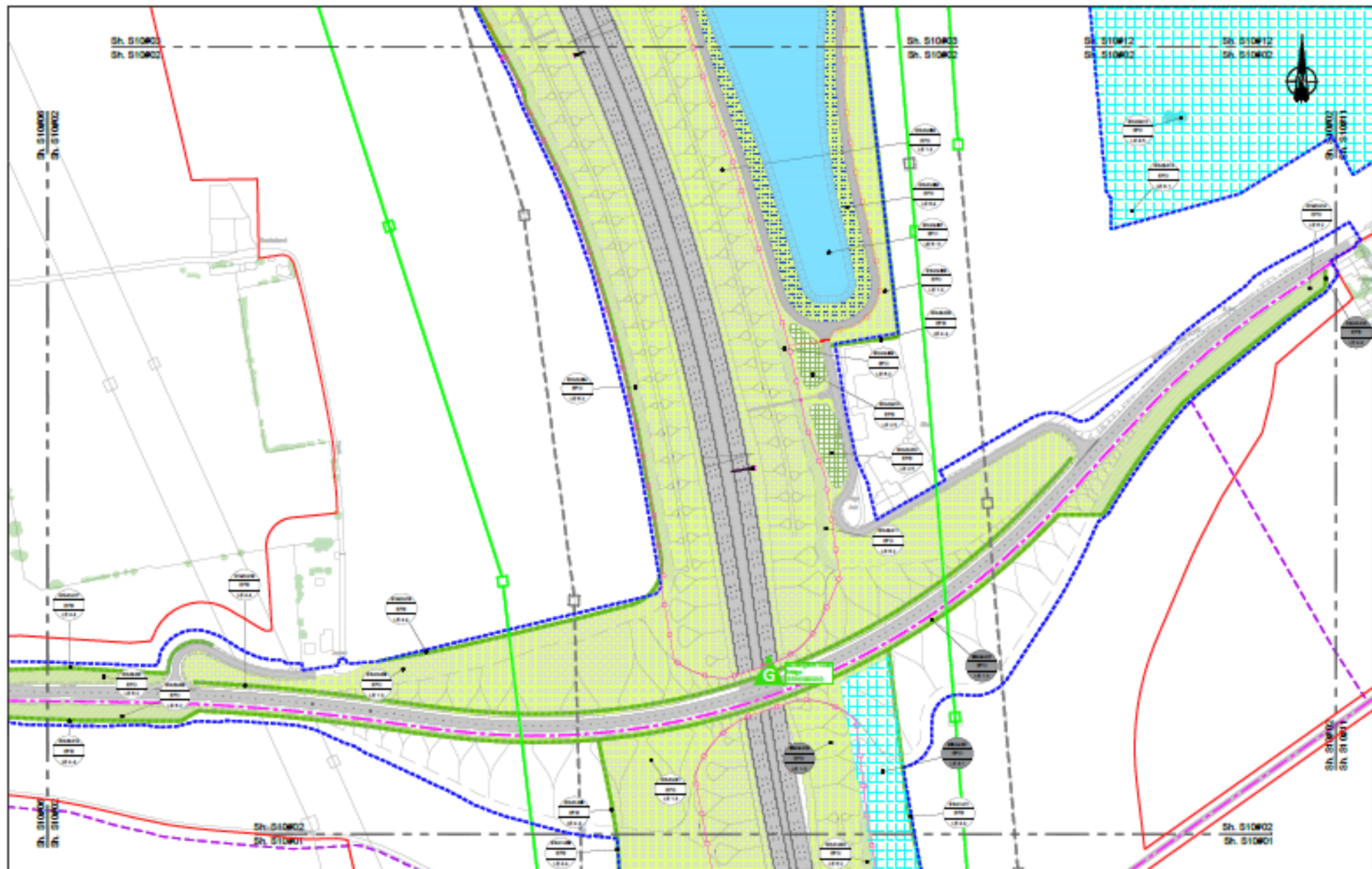


Project: Lower Thames Crossing
 TR010032/AP/16.2
ENVIRONMENTAL MASTERPLAN
SECTION 12
SHEET 2
 HES40536-C/JA-EN-012_0900000_2-DR-22-0000

Environmental Masterplan Extracts

- Section 10 – [REP4 - 129](#)



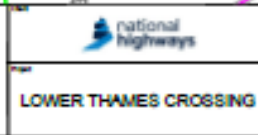


ENVIRONMENTAL ZONES		PLANTING		WATER	
[Red]	Red Zone	[Green]	Planting	[Blue]	Water
[Blue]	Blue Zone	[Light Green]	Planting	[Light Blue]	Water
[Green]	Green Zone	[Dark Green]	Planting	[Dark Blue]	Water
[Yellow]	Yellow Zone	[Lightest Green]	Planting	[Lightest Blue]	Water
[Purple]	Purple Zone	[Darkest Green]	Planting	[Darkest Blue]	Water

ROADS		UTILITIES	
[Grey]	Road	[Black]	Utility
[Light Grey]	Road	[Red]	Utility
[Dark Grey]	Road	[Green]	Utility
[White]	Road	[Blue]	Utility

ENVIRONMENTAL FEATURES		STRUCTURES	
[Green]	Environmental Feature	[Grey]	Structure
[Blue]	Environmental Feature	[Light Grey]	Structure
[Yellow]	Environmental Feature	[Dark Grey]	Structure
[Purple]	Environmental Feature	[White]	Structure

ENVIRONMENTAL FEATURES		STRUCTURES	
[Green]	Environmental Feature	[Grey]	Structure
[Blue]	Environmental Feature	[Light Grey]	Structure
[Yellow]	Environmental Feature	[Dark Grey]	Structure
[Purple]	Environmental Feature	[White]	Structure



DCO Examination	TR010032/APP/5.2
ENVIRONMENTAL MASTERPLAN	
SECTION 10	
SHEET 2	
1025-0029-CAV-024-010_014000000_2-09-22-00003	

